



What's new in AppliDis Fusion 4 Service Pack 2

Systancia Publication : November 2011

Summary

This new AppliDis Fusion 4 Service Pack 2 version introduces significant new features and enhancements to the solution. The 4 following major features have been integrated are:

- Virtualization wizards
- Simplified AppliDis installation
- The AppliDis integration Toolbox
- Themes for the AppliDis portal



Copyright

Copyright © Systancia 2011 – All rights reserved. Systancia and AppliDis are trademarks of Systancia.

The information provided in this document is by way of information only, and does not therefore constitute any kind of commitment for Systancia. The information contained herein may be amended by Systancia at any time without notice.

Trademarks of other companies: all other trademarks, product names and company names referred to in this document are mentioned for explanatory purposes and belong to their respective holders. More specifically, Microsoft, Windows, Windows 2000, Windows 2003 and Windows 2008 Server are trademarks of Microsoft Corporation in the United States and in other countries.

Systancia
Actipolis 3
3, rue Paul Henri Spaak
68390 Sausheim
France

Phone: (+33) 3 89 33 58 20
Fax: (+33) 3 89 33 58 21
Web: <http://www.systancia.com>
email: sales@systancia.com

Table of content

Introduction	5
AppliDis simplified installation	6
What does it do?	6
What's new?	6
Quick installation for product evaluation	6
Advanced installation for customized installation	7
How I use it?	7
Virtualization wizards	8
What does it do?	8
What's new?	9
RDS Virtual Desktops	10
What does it do?	10
How can I activate it?	10
AppliDis Online Help	11
Where will I find information?	11
The AppliDis Administration Console	11
Summary of AppliDis configuration	12
What does it do?	12
Where will I find information?	12
AppliDis system tools (Toolbox)	13
What does it do?	13
Where will I find information?	13
AppliDis Add-ons	14
What does it do?	14
Where will I find information?	14
AppliDis portal theme customization	15
What does it do?	15
Where will I find information?	16
Maintenance message	17
What does it do?	17
Where will I find information?	17

Introduction

This document describes all new features included in AppliDis Fusion 4 Service Pack 2. It also details the added value for both users and administrators.

AppliDis simplified installation

What does it do?

A new simplified installation mode has been integrated into the AppliDis setup, especially for evaluation purposes. The installer integrates a requirements validation masks. Missed requirements will be automatically deployed. Thus AppliDis will be ready to use with published applications within a few clicks.

What's new?

Quick installation for product evaluation

The simplified mode deploys automatically the Microsoft MSSQL 2005 Express database engine on the server. The user will be asked to select applications to publish among a bunch of standard programs always present on servers. The installer deploys SQL Express automatically. If it is already deployed on the server, a new SQL instance is then created. Please note that neither database catalog nor database instance are removed if you uninstall AppliDis.



Figure 1 AppliDis installation mode selection

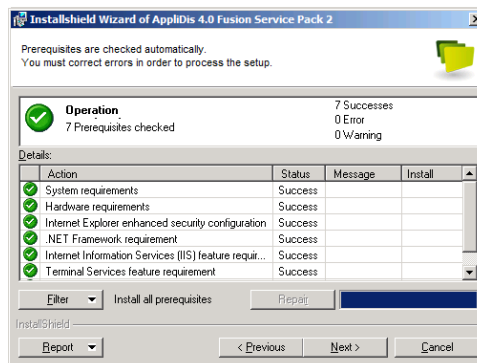


Figure 2 AppliDis automatic requirements check in

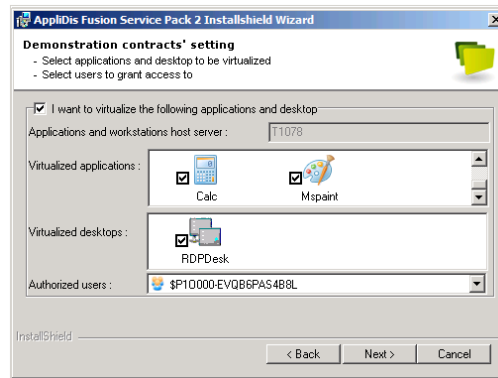


Figure 3 Selection of applications to be virtualized

Advanced installation for customized installation

The advanced mode is the usual installation mode. This mode integrates the requirements validation as well as for the simplified mode.

This mode is recommended for installing AppliDis in production context. You will be asked to create a new database into a running SQL instance or just attach AppliDis to an existing database.

How I use it?

On the first screen, select the « simplified mode » or « advanced ».

Virtualization wizards

What does it do?

Two wizards have been added into the management console to simplify the virtualization of applications and desktops. From a single window, the administrator can manage contracts directly with drag and drop. Thus, navigating from user menus to contracts menus to create contracts is no longer necessary, since contracts are now created by the wizard. It is still possible to manage contracts using the original manner.

The wizard brings:

- Central and unique access to applications, user groups and contracts
- Simplified contract creation

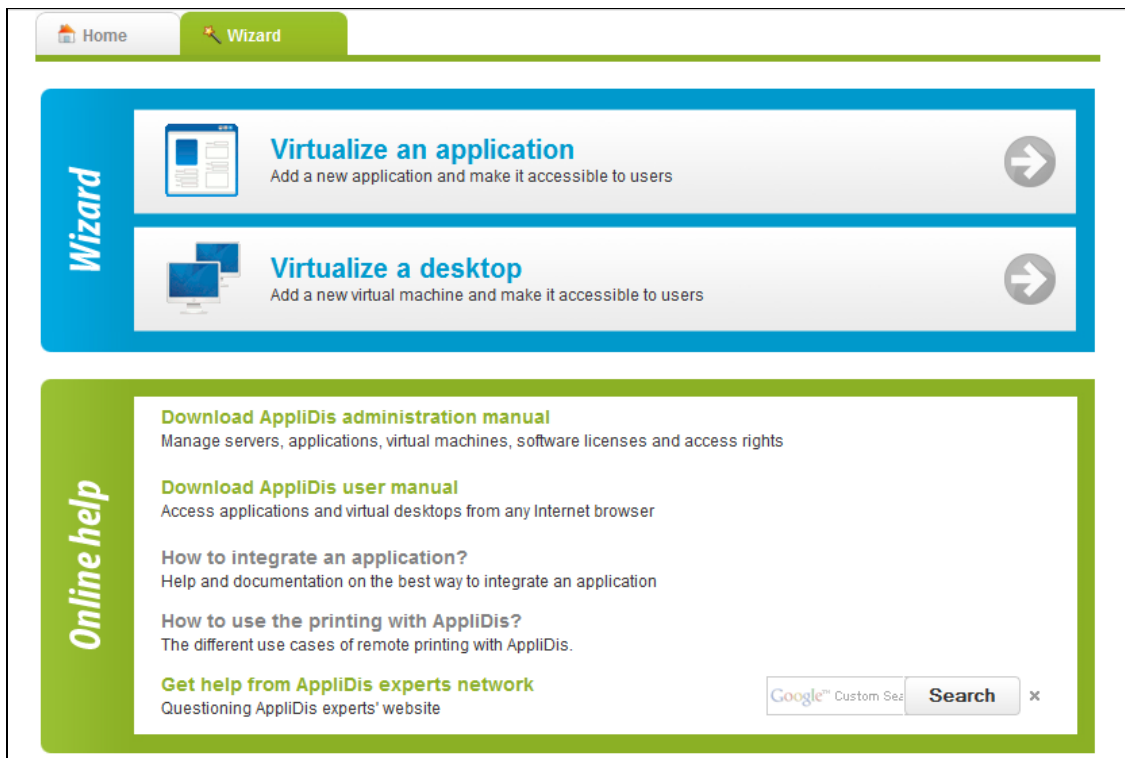


Figure 4 Wizards menu – AppliDis Fusion 4 SP2

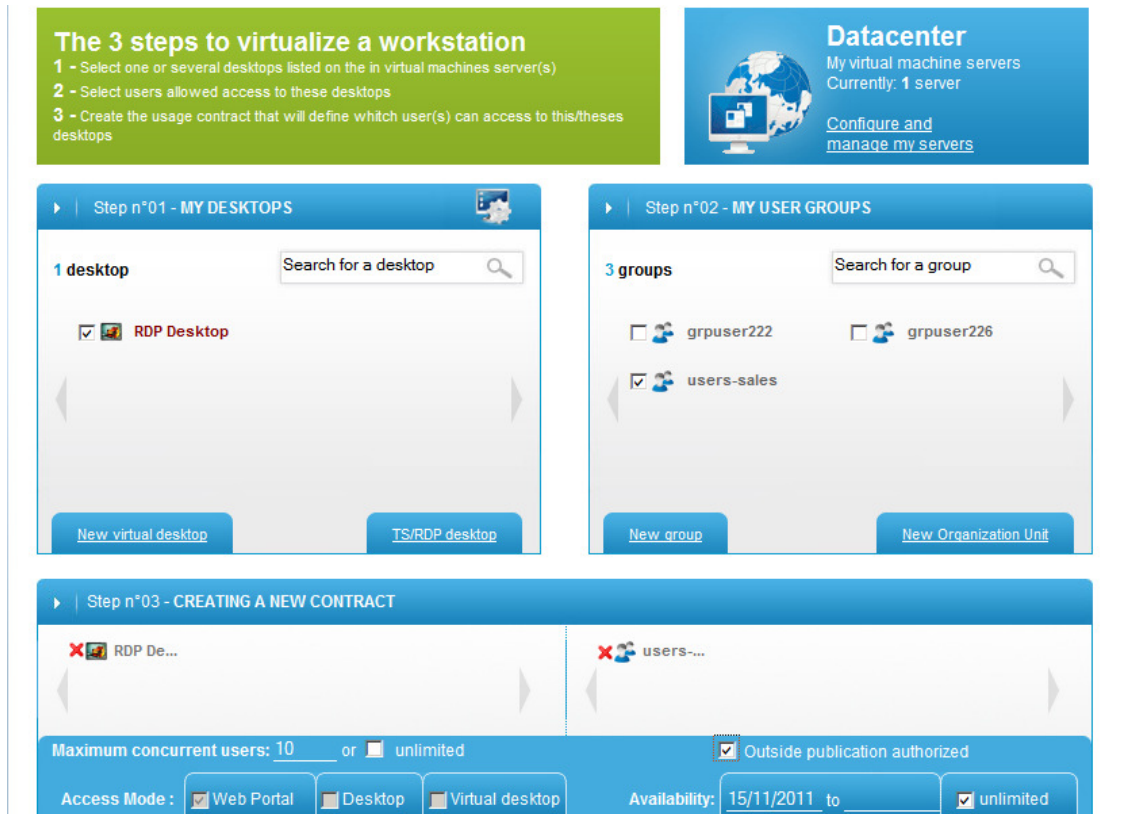


Figure 5 Desktop virtualization wizard

What's new?

The available features are:

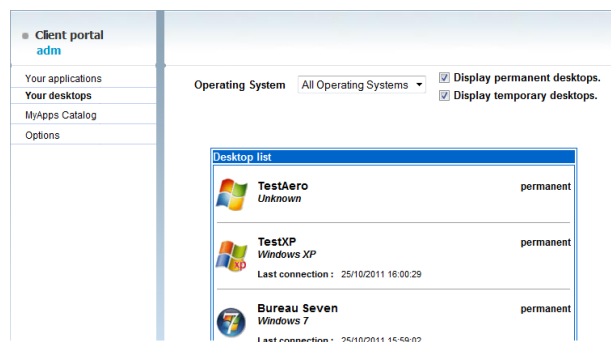
- Wizard for bringing applications to end users.
- Wizard for bringing virtual desktops to end users.

RDS Virtual Desktops

What does it do?

With AppliDis Fusion 4 SP2 it is now possible to publish a RDS desktop with Aero or XP theme in the same manner as a virtual machine (VDI). This desktop is hosted by an AppliDis Application Server running Windows 2003 or Windows 2008.

For the user, no noticeable change will be perceived between an XP/Seven virtual Machine and a RDS desktop since the layouts are quite the same.



Picture 6 Virtual Desktops list from the AppliDis Portal

How can I activate it?

From the AppliDis Administration Console, go to the "Desktops" Menu, Select the "Desktops List" sub menu. Click the "New TS/RDS Desktop" button. Select the requested theme and the display name for this Desktop.

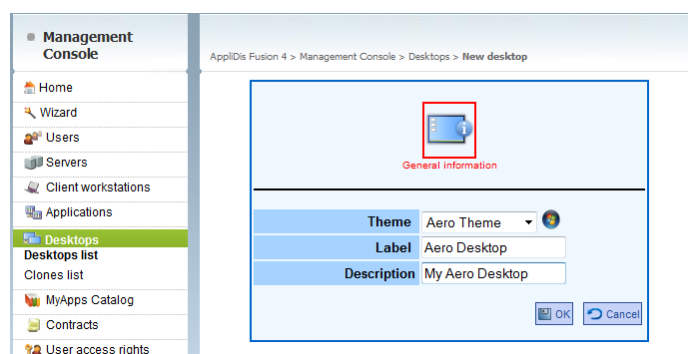


Figure 7 Configuring a RDS Desktop with Aero theme

The Desktop will appear into the list. It is now ready for user association by creating a contract in the same manner as for application publication.

AppliDis Online Help

Where will I find information?

The AppliDis Administration Console

AppliDis manuals are accessible directly from the management console into the wizard menu. If you are connected to the Internet, you will be able to ask the AppliDis experts network web site directly from AppliDis.

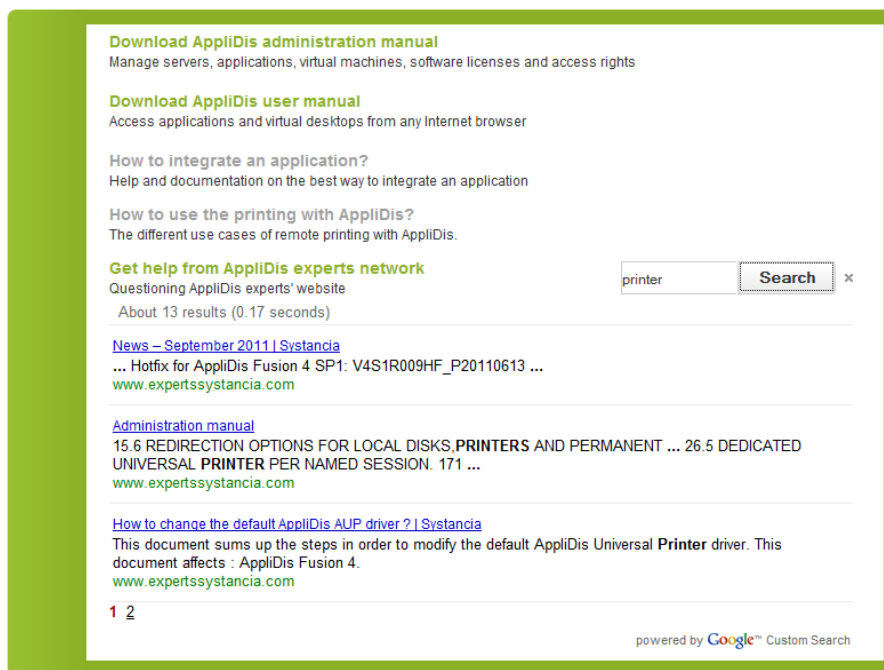


Figure 8 Requesting the Systancia Experts Website from AppliDis

Summary of AppliDis configuration

What does it do?

From the AppliDis Administration console, it is possible to generate an instant configuration report.

The screenshot shows the 'Summary of AppliDis configuration' report from the Management Console. The report includes the following sections:

- Server list:** A table with columns: Server name, Role, Hotfix, Operating system, RDP port, Gateway port, Memory, Internal IP, External IP. It shows one server (T1078) with a role of 'Administration and connection broker' and 'User web portal'. It also notes 'Total 1 server(s) including 1 application host and desktops server(s) and 1 infrastructure server(s)'.
- Server list virtuals machines hosts:** A table with columns: Name, Host type, URL, Login, SSL secured connection, Host authentication, Root certificate. It notes 'Total 0 server(s) virtuals machines hosts'.
- Virtual IP configuration:** A table with columns: Enable, Virtual IP address, Network mask, Delay. Values: Enable (False), Virtual IP address (0.0.0.0), Network mask (255.255.0.0), Delay (30).
- HTTP Gateway configuration:** A table with columns: Server name, IP address, SSL, URL, Port, Active. It notes 'Total server(s) including 0 enabled'.
- IP ranges which don't use the HTTP Gateway:** A table with columns: Id, IP address, Network mask. Values: Id 1 (127.0.0.0, 255.0.0.0), Id 2 (192.168.0.0, 255.255.0.0), Id 3 (172.16.0.0, 255.240.0.0), Id 4 (10.0.0.0, 255.0.0.0).

Figure 9 AppliDis instant report

This configuration information are quickly accessible and will bring a significant time gain while gathering technical information for the AppliDis support. This configuration information are all accessible from a single location.

In environments with multiple application servers, any configuration difference with one server will be quickly identified.

Where will I find information?

From the Management Console, go to the "Maintenance" menu and select the "configuration summary".

AppliDis system tools (Toolbox)

What does it do?

All AppliDis system tools are now accessible from the AppliDis administration console. These tools are categorized as:

- Applications / Hardware / Third party systems
- Databases
- Gateway – Proxy RDP
- Printing
- Applications integration
- AppliDis integration
- RDP / TS / RDS
- VDI

Where will I find information?

The Toolbox is accessible from the AppliDis administration console, into the “Toolbox” menu.

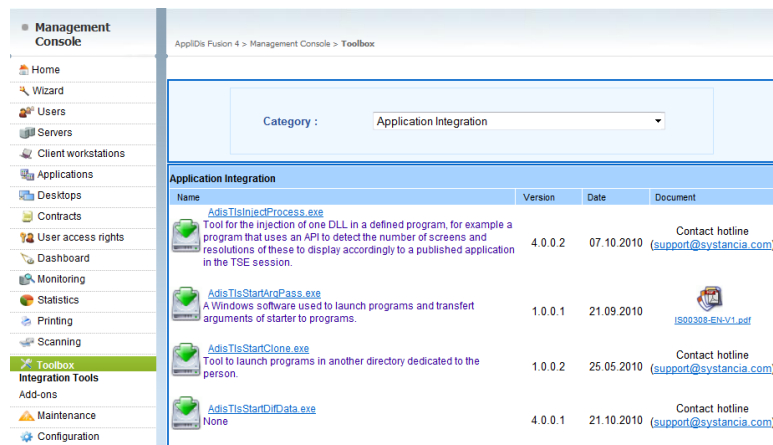


Figure 10 The AppliDis Toolbox

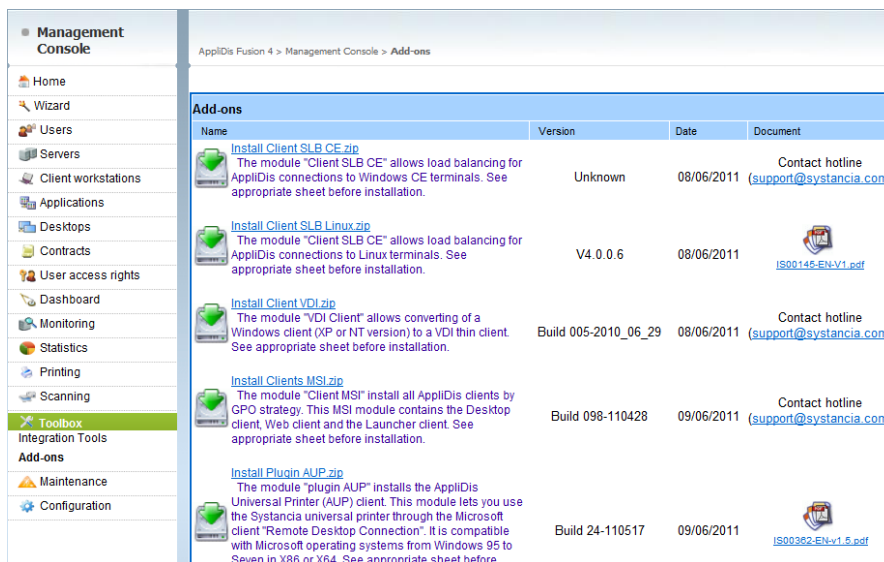
AppliDis Add-ons

What does it do?

From the AppliDis Administration console find all AppliDis additional modules. You will find the AppliDis SLB Client for Linux, a module which turns an XP or NT workstation into a VDI client. Each module is described into a technical sheet.

Where will I find information?

From the AppliDis administration console, click the "Toolbox" menu, then select "Add-Ons".



Name	Version	Date	Document
Install Client SLB CE.zip The module "Client SLB CE" allows load balancing for AppliDis connections to Windows CE terminals. See appropriate sheet before installation.	Unknown	08/06/2011	Contact hotline (support@systancia.com)
Install Client SLB Linux.zip The module "Client SLB CE" allows load balancing for AppliDis connections to Linux terminals. See appropriate sheet before installation.	V4.0.0.6	08/06/2011	IS00146-ENV1.pdf
Install Client VDI.zip The module "VDI Client" allows converting of a Windows client (XP or NT version) to a VDI thin client. See appropriate sheet before installation.	Build 005-2010_06_29	08/06/2011	Contact hotline (support@systancia.com)
Install Clients MSI.zip The module "Client MSI" install all AppliDis clients by GPO strategy. This MSI module contains the Desktop client, Web client and the Launcher client. See appropriate sheet before installation.	Build 098-110428	09/06/2011	Contact hotline (support@systancia.com)
Install Plugin AUP.zip The module "plugin AUP" installs the AppliDis Universal Printer (AUP) client. This module lets you use the Systancia universal printer through the Microsoft client "Remote Desktop Connection". It is compatible with Microsoft operating systems from Windows 95 to Seven in X86 or X64. See appropriate sheet before	Build 24-110517	09/06/2011	IS00362-EN-v1.6.pdf

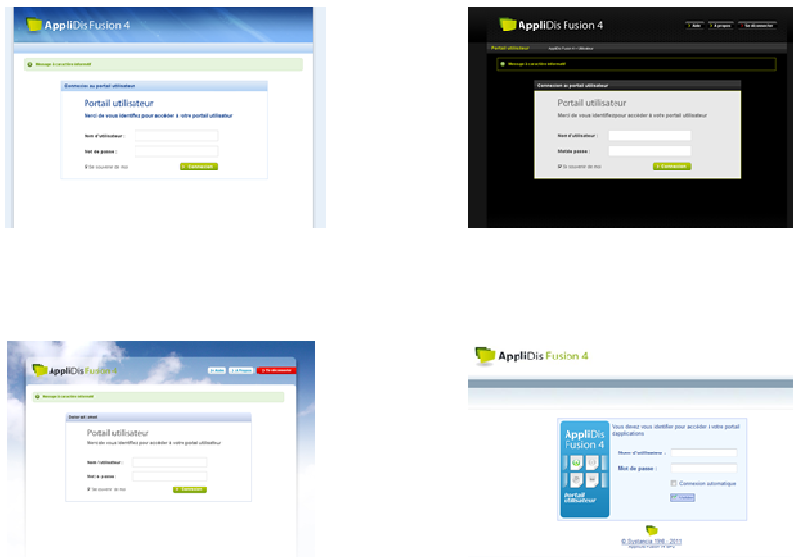
Figure 11 AppliDis Add-Ons from the AppliDis administration console

AppliDis portal theme customization

What does it do?

From the AppliDis administration console, it is possible to customize the AppliDis portal. Four pre-configured themes are proposed (see picture below).

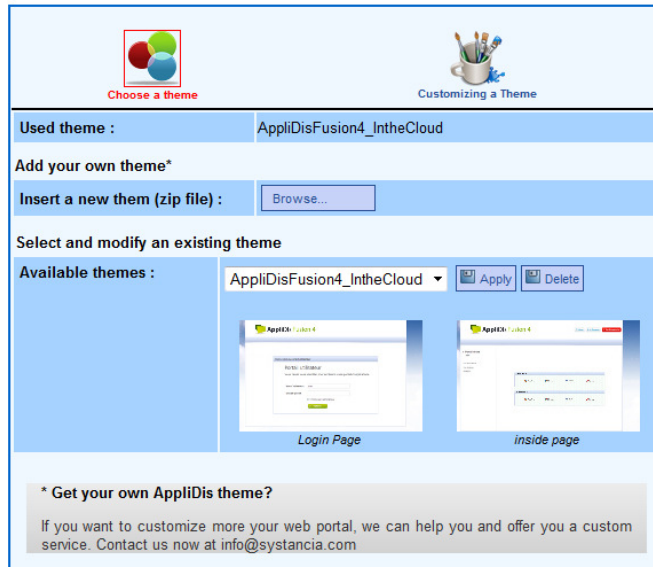
You can change the logo from the top banner as well as the picture from the center, directly from the AppliDis administration console. If you need further customization, please feel free to contact directly the AppliDis Support.



Picture 12 The four available templates

Where will I find information?

From the AppliDis administration console, go to the configuration/customization menu.

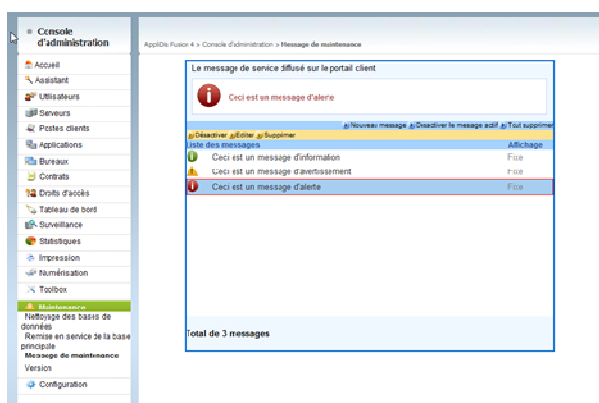


The screenshot shows the 'Customizing a Theme' section of the AppliDis administration console. At the top, there are two icons: 'Choose a theme' (a colorful circle) and 'Customizing a Theme' (a pencil in a cup). Below these, the 'Used theme' is set to 'AppliDisFusion4_IntheCloud'. Under 'Add your own theme*', there is a 'Browse...' button for 'Insert a new them (zip file)'. The 'Select and modify an existing theme' section shows 'Available themes' with a dropdown menu set to 'AppliDisFusion4_IntheCloud' and 'Apply' and 'Delete' buttons. Two theme preview thumbnails are shown: 'Login Page' and 'inside page'. At the bottom, a grey box contains the text: '* Get your own AppliDis theme? If you want to customize more your web portal, we can help you and offer you a custom service. Contact us now at info@systancia.com'.

Maintenance message

What does it do?

You can configure a message to be displayed to users on the AppliDis Portal. Use this functionality to inform users for scheduled system maintenance or any other event.



Picture 13 Maintenance message configuration

Where will I find information?

You will find this functionality into the AppliDis administration console, into the “maintenance” menu.